



Your business in mind.



## SAGE ABRA

## SAGE ABRA HR

### COMPREHENSIVE BENEFITS MANAGEMENT

Create benefit plans, define eligibility criteria, and calculate employee, dependent, and employee premium and benefit costs.

### U.S. COMPLIANCE & REPORTING (SAGE ABRA HRMS V8.1 AND SAGE ABRA SUITE - U.S. EDITION)

Easily manage government requirements for regulations such as EEO, I-9, Vets-100, FMLA, OSHA, and workers' compensation and stay compliant with COBRA and HIPAA regulations.

### CANADIAN GOVERNMENT COMPLIANCE AND REPORTING (SAGE ABRA HRMS v8.1 AND SAGE ABRA SUITE - CANADA EDITION)

Manage Canadian compliance reporting with standard reports that include EE audit reports, OHS reports, and worker's compensation.

### POWERFUL REPORTING TOOLS

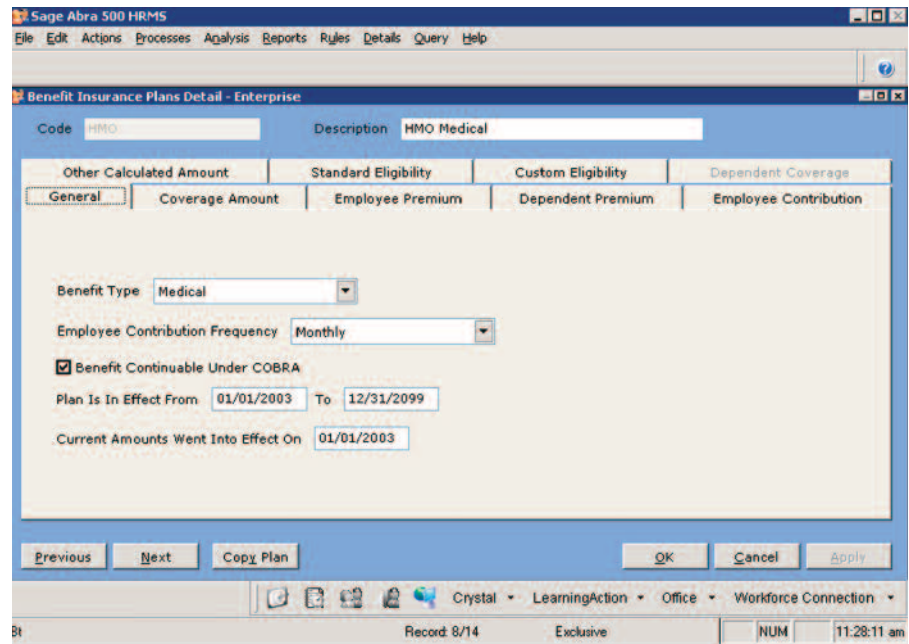
Get access to critical business information regarding compliance and strategic planning with powerful reporting tools included in Abra HR.

### U.S. AND CANADIAN SUPPORT

Abra HR is available in versions that support both U.S. and Canadian companies, as well as companies with employees in both countries.

#### Available with:

- Sage Abra HRMS v8.1 or higher
- Sage Abra Suite- U.S. Edition
- Sage Abra Suite - Canada Edition



Ensure government compliance, simplify benefits administration, and manage employee information with Sage Abra HR. By automating and organizing human resource processes, Abra HR eliminates time-consuming clerical work and provides powerful tools for managing information about employees—your organization's greatest asset and investment. Abra HR features benefits management capabilities that streamline benefits administration with unlimited benefits plans, easily defined eligibility criteria, benefit plan setup wizards, and more. Convenient features make it easy to readily access important personnel information such as job history, performance reviews, education, and employee attachments. Plus, Abra HR includes tight integration with Microsoft Office, making it easy for you to view and analyze data in Microsoft Word and Excel for on-the-spot decision making.

It includes robust reporting capabilities that satisfy virtually all of your compliance needs. For U.S. companies, Abra HR reporting tools include over 100 standard reports, such as OSHA compliance, EEO Reports, FMLA, and Vets-100, as well as a wide variety of benefit reports, compensation reports, and more. Compliance reports for Canada include Employment Equity (EE) audit reports, Occupational Health and Safety (OHS) reports, and Workers' Compensation reporting. Abra HR also comes complete with Crystal Reports® for your more complex reporting requirements, as well as Abra Secure Query, an easy-to-use report writer that guides you through the query process in easy-to-understand steps.

When combined with Sage Abra ESS, Abra HR can significantly reduce the amount of time HR departments spend bogged down on routine paperwork. Whether your company is automating human resource processes for the first time, or upgrading to full-featured HR process automation, Sage Abra is the solution to reduce administrative overhead, save time, and decrease costs.

From developing innovative products to providing award-winning customer support, Sage Software is dedicated to surpassing your expectations. Our software is supported by a nationwide network of Certified Business Partners who are your resource for implementation, training, service, and support. For more information about Abra HR, please contact your local Sage Software Business Partner, call us toll free directly at 800-424-9392, or visit our Web site at [www.sageabra.com](http://www.sageabra.com).



# Sage Abra

HR

*"Abra HR has reduced about 20 percent of our workload in HR, and given us better information at the same time. In addition, it will allow us to keep growing the club's membership without adding new staff in HR—exactly what any organization wants."*

Elizabeth Johnson-Stevens, Special Projects Coordinator  
Salutary SportsClubs, Inc.

## FEATURES

### Quick Access to Critical Information

Empower your human resource staff with vital information when they need it! Easily view key employee information, including demographics, insurance and savings benefits, skills, education, leave of absence, and employee attachments.

### Comprehensive Benefits Management

Quickly and easily create accurate savings and insurance plans, as benefit plan set-up interviews take you step-by-step through the entire process. You can track unlimited benefit plans, define eligibility criteria, and automatically calculate precise employee, dependent, and employer premium and benefits costs. Benefits history reporting allows you to generate reports on employees' prior benefit elections, and changing employees' benefit plans from the current year to the following year can be accomplished with a click of a button.

### Analysis Tools

Drill down to specific information with analysis tools for fast evaluation of human resources data. Quickly investigate critical areas such as salary, turnover, and performance issues.

### U.S. Government Compliance and Reporting

For Sage Abra HRMS v8.1 and Sage Abra Suite - U.S. Edition only. Increase accuracy and eliminate costly mistakes by accurately managing government requirements for regulations such as EEO-1, EEO-4, I-9 Citizenship Verification, and Vets-100. Identify problem areas to help improve safety and meet OSHA regulations with accident and workers' compensation claims tracking.

### COBRA and HIPAA Compliance

For Sage Abra HRMS v8.1 and Sage Abra Suite - U.S. Edition only. Take the hassle out of COBRA and HIPAA compliance. In addition to automated, personalized notification letters that describe coverage options and costs, Abra HR provides billing statements, mailing labels, and complete eligibility reports for COBRA management. It also includes a Certificate of Coverage report showing proof of previous health insurance for HIPAA compliance.

### Canadian Government Compliance and Reporting

For Sage Abra HRMS v8.1 and Sage Abra Suite - Canada Edition only. Manage essential data for government reporting and reduce compliance risks with standard reports including EE audit reports 1-6, OHS accident analyses, WSIB Employer's Report Form 7 (Ontario).

### Security

With Abra HR, you'll never have to worry about the security of your sensitive employee information. Sophisticated, multi-level security options allow you to control which groups have access to data at any level—even field level. System administrators can create and assign an unlimited number of user ID's and passwords, and audit trails make it easy to identify who made each change by date, time, and type of change.

### U.S. and Canadian Support

Abra HR for Sage Abra HRMS v8.1 and higher supports companies with employees in both the United States and Canada. It even includes support for companies with employees in both countries under the same employer.

### Powerful Reporting Tools

Robust reporting capabilities included in Abra HR are designed to meet virtually every reporting need. With over 100 standard reports that can be previewed, printed, and exported to a file, you can help improve your company's analytic capabilities and drive better business decisions. Crystal Reports®, one of the most powerful reporting tools on the market, is included with Abra HR and provides over 120 additional, more complex reports and templates, as well as the ability to create custom reports. Additionally, Abra HR comes complete with Abra Secure Query, a report writer that guides you through the query process in easy-to-understand steps, so you don't have to be an IT expert to use it.

Solutions Technology & Software, Inc. - 1191 E. Higgins Road - Elk Grove Village, Illinois 60007  
www.hrpayroll.com - 800-227-2729



©2006 Sage Software, Inc. All rights reserved. The Sage Software logo and the Sage Software product and service names mentioned herein are registered trademarks or trademarks of Sage Software, Inc., or its affiliated entities. Crystal Reports is the registered trademark and technology of Business Objects SA. All other trademarks are the property of their respective owners.

HY600001 06-1246 04/06